

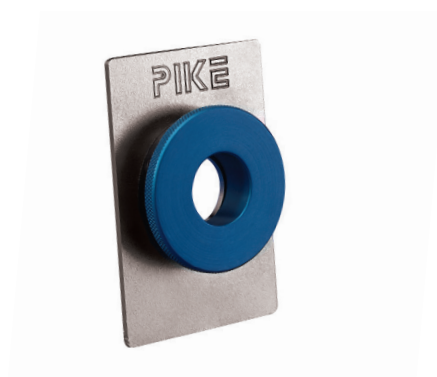
Sample Holders For Transmission FTIR Analysis

Transmission sample holders are convenient tools to have in the lab. They position KBr pellets, films, mulls and smears at the correct beam height in the sample compartment for quick measurements. All holders are constructed of high-quality materials and feature a 2 x 3" standard slide mount compatible with all FTIR spectrometers.



UNIVERSAL SAMPLE HOLDERS

Feature a spring-loaded mechanism which conveniently keeps in place films, salt plates, KBr pellets and other materials. The clear aperture of the holders is 20 and 10 mm. This universal holder offers great sample mounting flexibility.



HEAVY-DUTY MAGNETIC FILM HOLDER

Designed to hold thick polymer materials and other transmission samples. The holder features a large size magnet and steel plate with a 20-mm aperture.



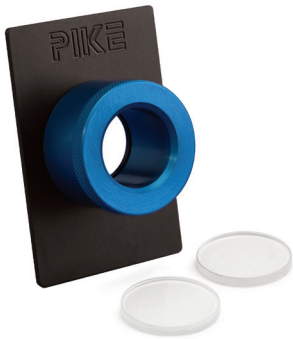
THE SINGLE PELLETT HOLDER

Holds 7-mm KBr pellet collar, and is designed for use with the PIKE Technologies Hand Press and Pixie Hydraulic Press. For making only 7-mm pellets, this version is more convenient than the Dual Pellet Holder.



A DUAL PELLETT HOLDER

Holds 1-, 3- and 7-mm KBr pellet collars, and features semi-circular mounts with slots accommodating specified size pellets as made using the PIKE Technologies Hand Press.



PRESS-ON DEMOUNTABLE CELL HOLDERS

Used for the analysis of smears and mulls. Available in 25- and 32-mm versions, both include mounting plate and pressure cap. Windows and spacers must be ordered separately.



PART NUMBER	DESCRIPTION
162-5600	Universal Sample Holder, 20-mm aperture*
162-5610	Universal Sample Holder, 10-mm aperture*
162-5500	Heavy-Duty Magnetic Film Holder
162-5300	Magnetic Film Holder for 13-mm pellets and film samples
162-3600	Press-On Demountable Cell Holders for 25-mm windows
162-3610	Press-On Demountable Cell Holders for 32-mm windows
161-1018	Single Pellet Holder for 7-mm pellets
161-1025	Single Pellet Holder for 1- and 3-mm pellets
161-5700	Dual Pellet Holder*
162-5410	Sample Card for 13-mm pellets (10 ea.)*
162-5400	Film Sampling Card, 20-mm aperture (10 ea.)*
161-2520	Bolt Press Holder
162-2105	Gas Cell Holder, 25 x 50 or 100 mm
162-2205	Gas Cell Holder, 38 x 50 or 100 mm

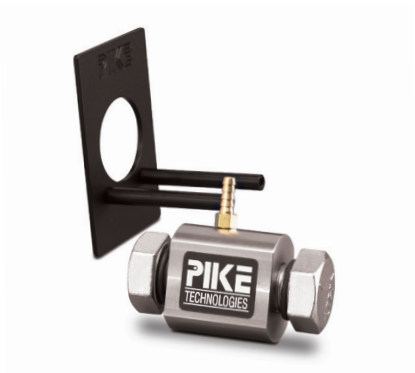
Notes: For more sample holder options, please contact PIKE Technologies. Holders marked "*" fit all standard 2 x 3" slide mounts, but due to their height may not allow for a complete sample compartment door closure on some smaller spectrometers. Please consult PIKE Technologies before placing an order.

Replacement Parts

162-5611	O-Rings for 20-mm Universal Sample Holder (6 ea.)
162-5612	O-Rings for 10-mm Universal Sample Holder (6 ea.)

THE MAGNETIC FILM/PELLET HOLDER

Used to mount KBr pellets and thin polymer films. Its components include a steel plate and flexible magnetic strip. The holder is designed to support 13-mm KBr pellets and films less than 0.5-mm thick.



BOLT PRESS AND GAS CELL HOLDERS

Available in three different sizes. Each holder has detachable support rods for different sized accessories. The holders can also be used for placing salt plates and other large samples.



SAMPLING CARDS

Inexpensive sample holders for analysis of films, polymers, 13-mm KBr pellets and other materials. Self-adhesive treated sides make sample preparation easy. The cards also offer compact and convenient means of sample storage. Two aperture sizes are available, 10-mm and 20-mm.